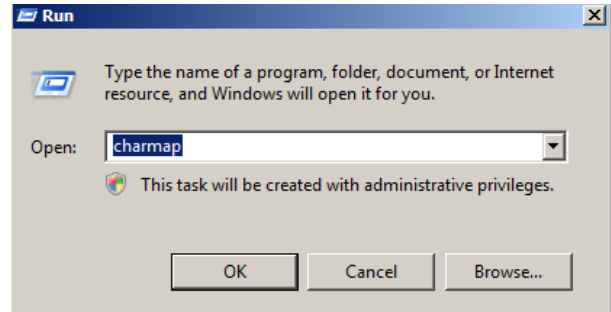


# How to Load Special Characters. By Diana Cedolia

4D Embroidery Extra should be open on the letter tab.  
Have the font you want to use showing in the choice box.

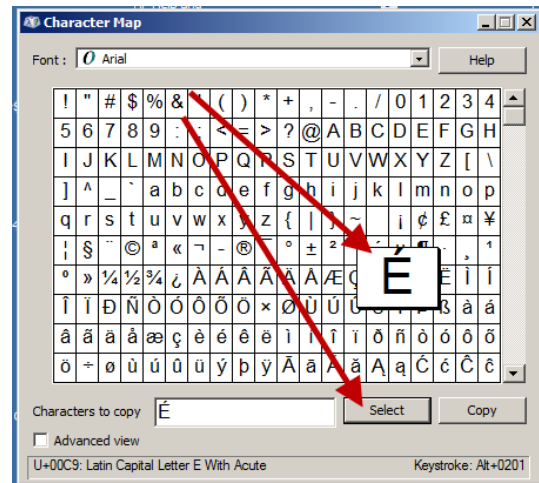
Click on Start (bottom right of your desktop)  
Click on Run  
Type.....Charmap

Click OK.



Click on the letter you want and click Select.

Click Copy



Place your cursor in the letter space and right click.

Click on Paste.

Your letter will appear in the letters window.

Click Apply.

